



H E A V E N L Y   A B O D E

**RAMS**  
*Casa Terra*

3 BHK Residences, Thiruvannamiyur





## WELCOME TO THE EXCITING WORLD OF RAMS

RAMS has been making winning strides since its inception way back in 1969. With over 250+ completed projects, 3500 happy families and firm footprints in Chennai, Bengaluru and Kodaikanal, RAMS continues to remain a trust-worthy, innovation-driven and value-rooted construction company.

Our experienced team at RAMS has dynamic, highly responsible leaders who have the drive, passion, business acumen to provide real estate assets that are built to last with the high potential to appreciate over time. The company stringently follows a corporate governance policy that promotes the highest levels of transparency and accountability to all stakeholders.

With over 54+ years of construction and service excellence, RAMS projects are known for its construction quality, timely completion, location advantages, aesthetic appeal, functional design, vaasthu compliance, futuristic designs and world class amenities.

Every RAMS project stands a tall testimony to its flawless project execution capabilities, keen eye for details, durable results and unmatched construction finesse.





“MODERN LIVING IN THE  
HEART OF THE CITY”

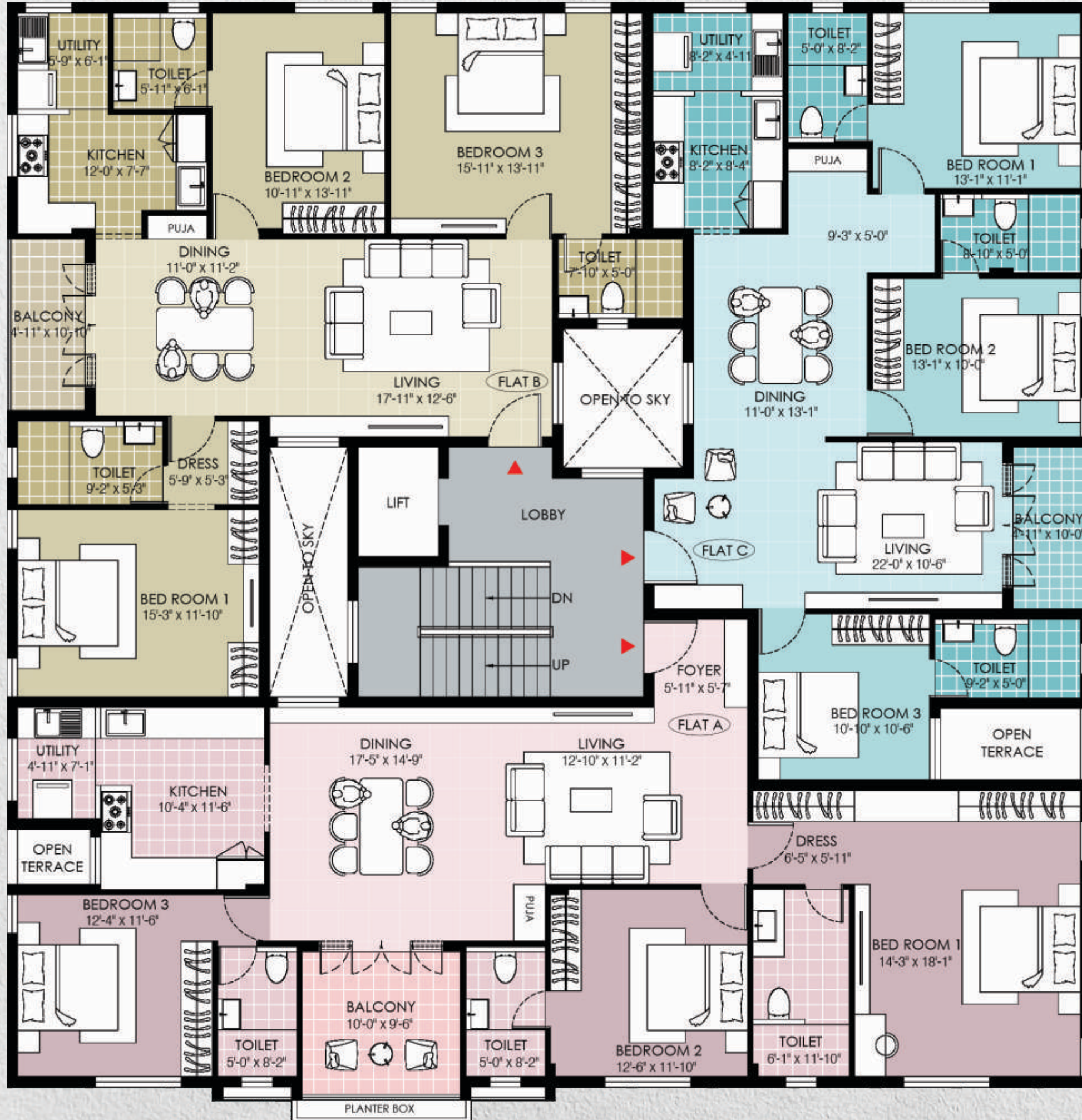
**RAMS**  
*Casa Terra*  
HEAVENLY ABODE



**Welcome to RAMS CASA TERRA apartments!** This has tastefully designed and functionally efficient luxury apartments with world class amenities and comforts at Thiruvanmiyur, one of the poshest and rapidly appreciating localities of Chennai.

This futuristically designed and vastu-friendly 3-bedroom homes spread across stilt plus 5 floors, offers privacy, comfort, covered car parking space, opulent interiors, adequate security facilities, walking track etc. This luxe residential paradise brings with it outstanding value for money and quick appreciation potential.

Built for the 'aesthetically inclined' and for those who want nothing but the best in their life, RAMS CASA TERRA offers a perfect setting in one of the best locations for an enchanting life with your loved ones. Care is taken to ensure each apartment is 'vastu' compliant so that you get a consistent flow of prosperity, wealth, health and success flowing into your life. This residential marvel has everything needed for a dream life within Chennai city limits.



## TYPICAL FLOOR PLAN

FLAT A 1930 SQ. FT.  
 FLAT B 1645 SQ. FT.  
 FLAT C 1500 SQ. FT.

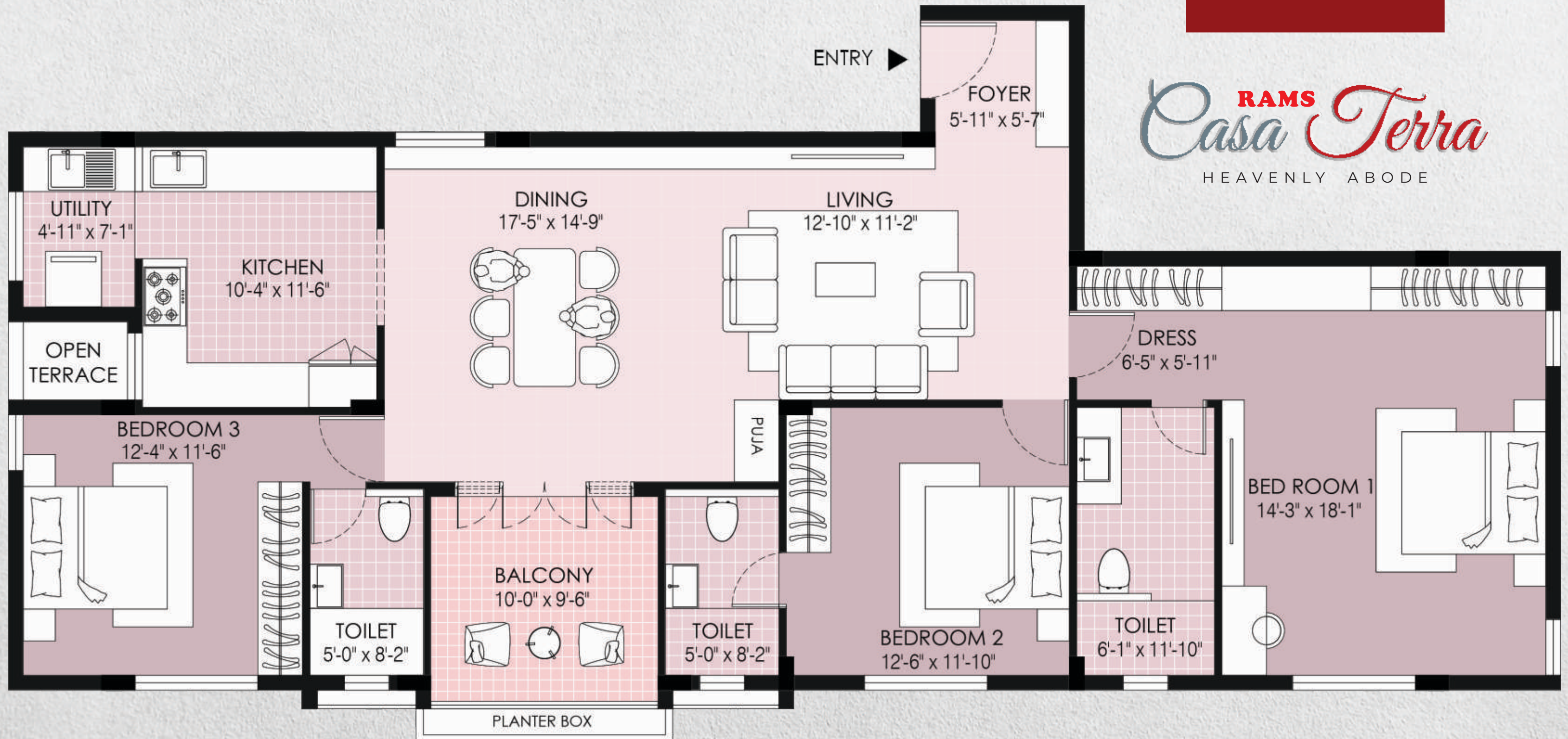
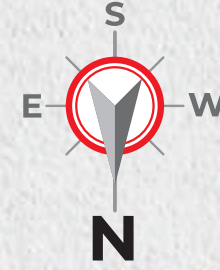


**RAMS**  
*Casa Terra*

HEAVENLY ABODE

← SRINIVASAPURAM MAIN ROAD →

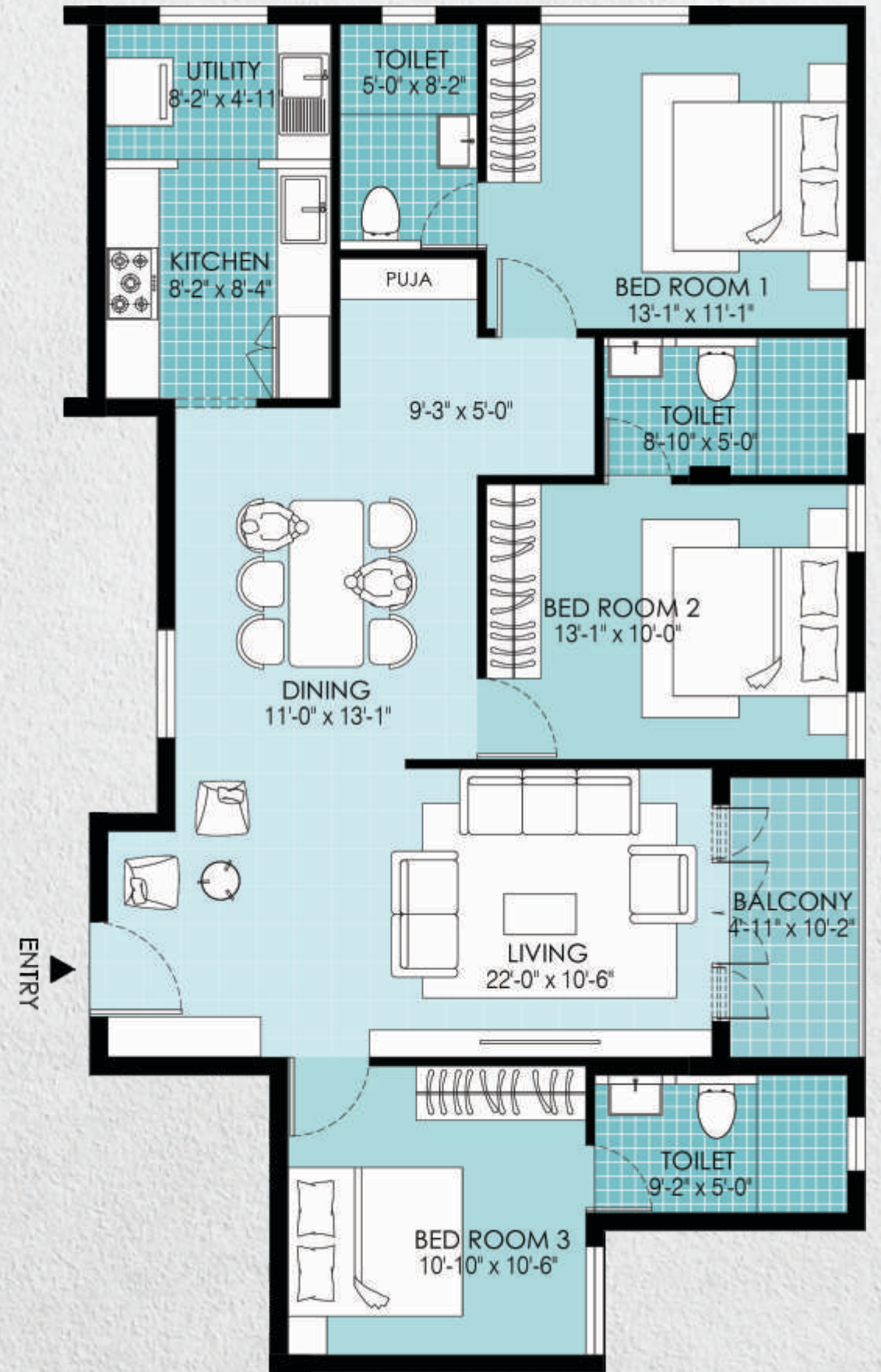
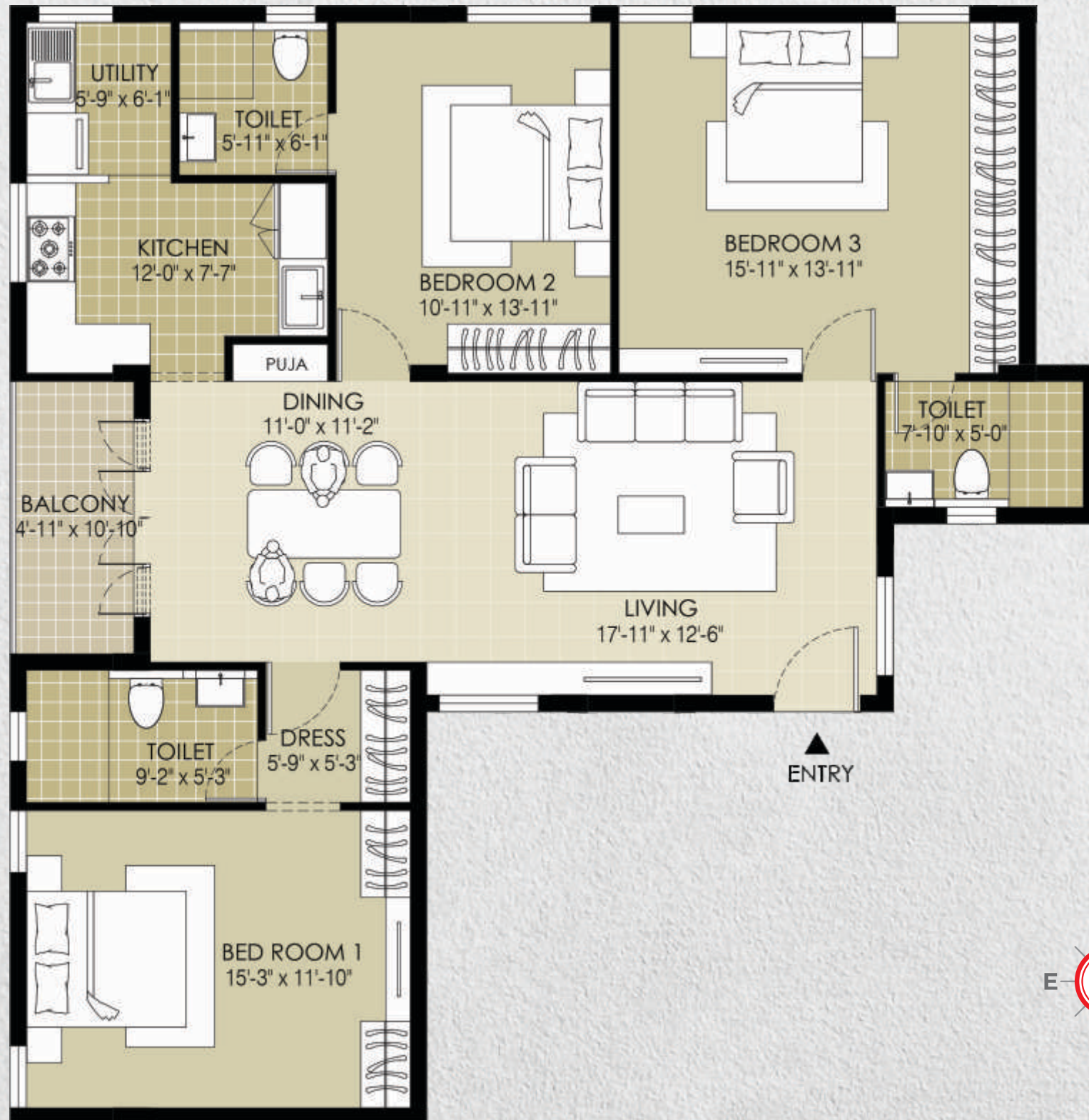
TYPE A  
1930 SQ.FT.



**RAMS**  
*Casa Terra*  
HEAVENLY ABODE

**TYPE B**  
1645 SQ. F.T.

**TYPE C**  
1500 SQ. F.T.



## AMENITIES



**Gated Community**  
With 24x7 Security & CCTV Back-Up.



**High Speed Elevator**  
Seamless Travel With Spacious Interior Cabin in Luxe Finish.



**Standby Genset with Solar Power Plant**  
24x7 Power Backup & Sustainable Solar Energy Generation.



**Reception**  
Lobby Area With Access Via Keycard Only.



**Feel Good Architecture**  
Vaastu Friendly Homes Well Ventilated & Provide Natural Day Lighting.



**Landscaped Spaces**  
Communal Spaces Shall Thrive With Lush Greenery.

Ample open space with large balconies.

Combination of modern architecture, high quality construction and contemporary décor to render a distinctive style.

Well laid-out broad roads, avenue trees and heavenly elegance forms part of it charm.

Large spacious bedrooms with attached bathrooms optimized with high end fittings for bed and restrooms.

High rental yield due to strong demand for 2/3bhk homes in the area.

RAMS CASA TERRA is nestled in the vicinity of Chennai's best schools, business hubs, malls, finest retail and social hangouts.

## SPECIFICATIONS

### BUILDING SPECIFICATIONS

**WALLS** - Red Brick / AAC Blocks with ISI Stamp.

**FOUNDATION** - As per reputed structural engineer drawing after soil grade testing.

**TREATMENT** - Anti-termite treatment at regular intervals and during foundation.

**SAND** - M SAND for concreting and brickwork.

P SAND for Outer & Inner Plastering.

**STRUCTURE** - Earthquake resistant RCC framed structure.

**LIFT** - Automatic Machine Roomless Elevator. (6 passenger capacity x 1 No.)

**ROADWAYS** - Rubber Mould M35 grade 60mm Paver Blocks with landscaping.

**CAR PARK** - Heavy Duty Car Parking Tiles with electrical provision at critical points.

**STEEL** - FE550 grade or equivalent from reputed brand.

**PLUMBING & ELECTRICAL** - Astral Make PVC Pipes.

**GENSET** - Power back up upto 5kv for each home and complete power back up for common areas (Kirloskar make or equiv.)

**MAIN GATE** - Entry & Exit Gate in unique design in mild steel make with MRF Paint Coating.

**LIFT LOBBY** - Granite Wall Facade / With Owner Name.

Board / Door Numbers / Post Box Provision at suitable location.

**BOUNDARY WALL** - Ambient Lighting (Bollard or Wall Lights) and Street Lights for Ground Level Roadways.

### INTERIOR SPECIFICATIONS

**PAINT** - Premium Emulsion Paint for interiors walls with 2 coat putty and 1 coat primer.

**TILES** - 4x2 Full body Vitrified tiles for Bedroom, Living & Dining Areas.

2x2 Full Body Vitrified Tiles - Rest All Areas.

**SANITARY FITTINGS** - Kohler / Parryware / Roca make.

**DOORS** - Teak Frame for all doors, main door in Teak shutter, bedroom doors in.

engineered wood & rest room in water proof engineered wood.

**WINDOW GRILLS** - Mild Steel Grills with antirust coating with enamel paint.

**SPLIT AC** - PVC line for Copper Pipes provisioned in living, bedrooms and dining (if applicable).

**BALCONY** - Mild Steel / Glass / Stainless steel handrail.

**HINGES** - Only SS 304 grade or equivalent.

**KITCHEN** - SS (or) Quartz Sink with granite counter top \*Black Galaxy equivalent.

**ELECTRICAL** - Legrand DB & Anchor Roma Switches.

### ELECTRICAL SPECIFICATIONS

A/C Provision for all bedrooms and living Intercom and Internet Points in living.

Geysers Point in all bathrooms.

Door Bell Provision.

Washing Machine Provision Point in balcony.

Common meter for lift, common motors and lighting in common areas.

3 plug points for TV, STB and Player and 2 5A extra across SB in living.

Fan and Chandelier provision in living and dining.

Fan Provision in bedrooms.

Kitchen - 1 x 15A and 2 x 5A points across counter.

Water filter and Chimney Provision.

Dining - 1 x 15A for fridge and 1 x 5A.

Light Point Provision in Balcony.

## LOCATION MAP

### SITE ADDRESS

RAMS Casa Terra Residences  
Door No. 16 & 16/1,  
Srinivasapuram Main Road,  
Thiruvanmiyur, Chennai - 600041.







---

RAMS BUILDERS

# 61 (28) Poes Garden, Chennai-600086.

P: +91 44 2499 2856 / 2499 2866

M: +91 98840 55522 / 98847 55582

E: [salesenquiry@ramsbuilders.in](mailto:salesenquiry@ramsbuilders.in)

W: [www.ramsbuilders.in](http://www.ramsbuilders.in)

---

**Disclaimer:** The brochure is only a conceptual presentation of the project and does not constitute a legal offering. The developers reserve the right to make changes without any prior notice.

**RERA No.: TN/29/Building/0452/2022**